

**Rehabilitation and extension of the M3 National Road in the Republic
of Moldova, Chisinau – Giurgiulesti/Romania Border, Porumbrei –
Cimislia section**

ANNEX 3

Project beneficiary:



Prepared by:



MARCH 2026

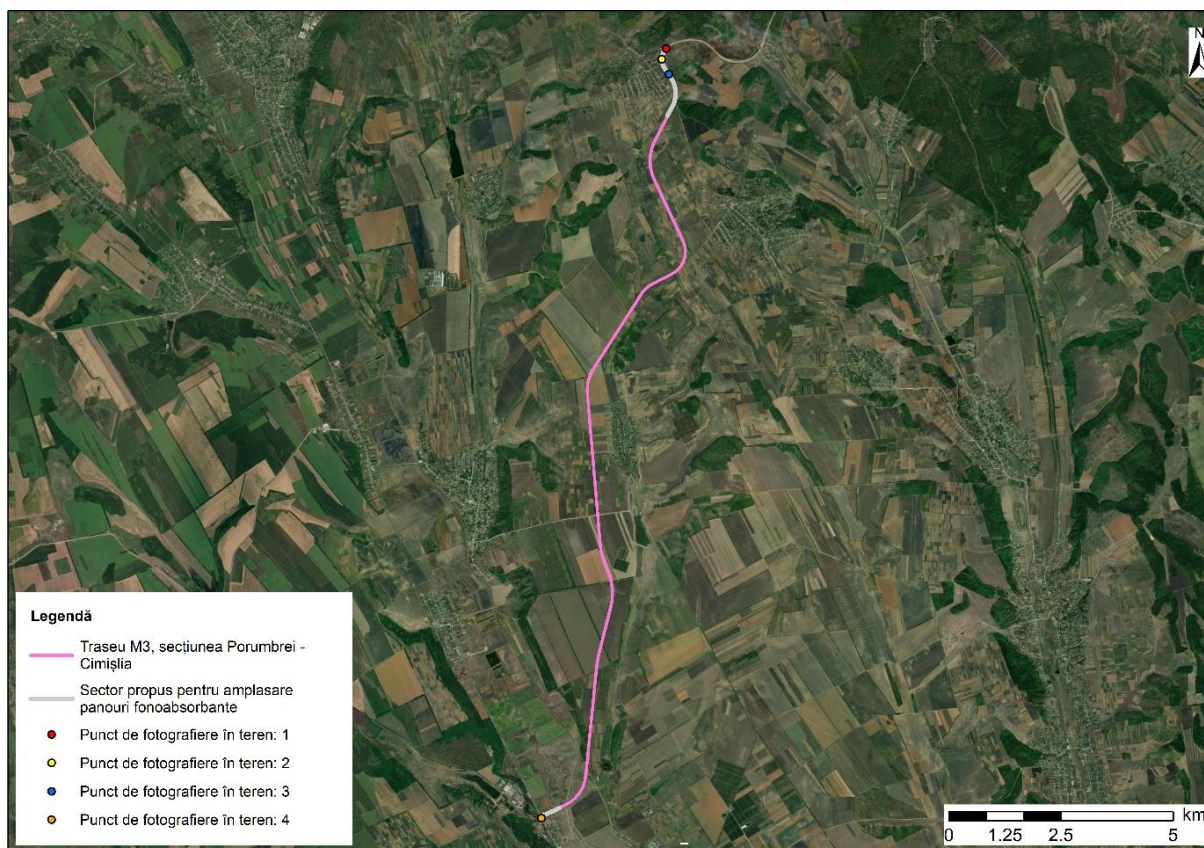


Figure 1. Location of sampling points in the field, M3 Porumbrei Road - Cimislia



Figure 2. The M3 Porumbrei - Cimislia road, the proposed sector for the installation of sound-absorbing panels between km 0+000 – 1+625. Photograph point - GPS coordinates (EPSG:4326): Lat. 46.695983 N, Long. 28.819633 E, southwest direction



Figure 3. The M3 Porumbrei - Cimislia road, the proposed sector for the installation of sound-absorbing panels between km 0+000 – 1+625. Photograph point - GPS coordinates (EPSG:4326): Lat. 46.693850 N, Long. 28.818217 E, northeast direction

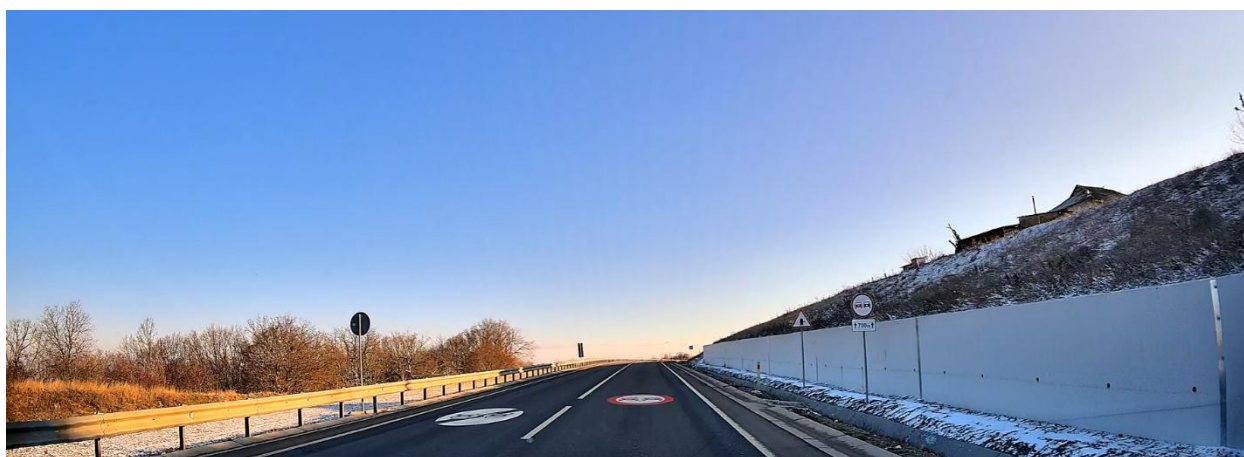


Figure 4. The M3 Porumbrei - Cimislia road, the proposed sector for the installation of sound-absorbing panels between km 0+000 – 1+625. Photograph point - GPS coordinates (EPSG:4326): Lat. 46.690800 N, Long. 28.820033 E, southbound



Figure 5. The M3 Porumbrei - Cimislia road, the proposed sector for the installation of sound-absorbing panels between km 18+500 – 18+975. Photograph point - GPS coordinates (EPSG:4326): Lat. 46.543017 N, Long. 28.772600 E, southbound